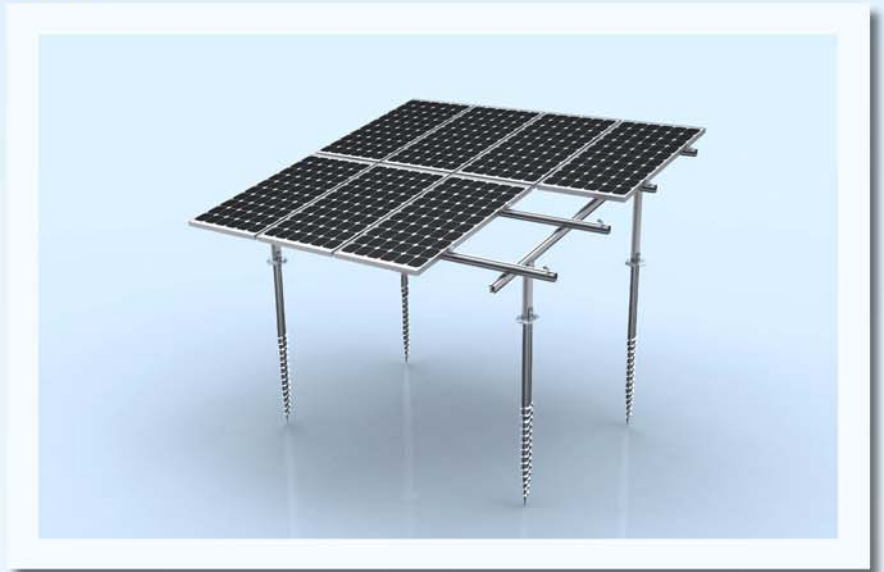


Ground Racking Systems

KM-S : Ground Screw Foundations

Where foundation costs and installation times are a factor, KNE's Ground Based Screw in System (KM-S) is your answer. Featuring a direct burrow drilling screw, this installation method is ideal for most soil types and provides a quick alternate solution to concreting.



Features

- Heavy duty hot dipped galvanized screws provide corrosion resistance and maximum longevity
- Designed for rapid mounting assembly and suitable for various ground types and allowing for future removal



Connecting Node

Beam & Joist Rails

Structural Column

Foundation Screw

- **Easy Installation:** Precision cut aluminum components stipulate hassle free systematic installation.
- **Innovative Design:** The KM-S series is a design based on evolving foundation types and providing alternate solutions for the ever changing market whilst still compliant with international standards.
- **Quality with Toughness:** The cold formed foundation screws of the KM-S series are derived from steel which is later hot dipped galvanized, ensuring extensive rust and corrosion resistance.